



**ALASKA DIVISION OF HOMELAND  
SECURITY & EMERGENCY MANAGEMENT  
SITUATION REPORT 24-198•July 16, 2024**



Toll-Free 1.800.478.2337

Anchorage Area 907.428.7000

SEOC 907.428.7100

<p><b><u>SEOC Preparedness Level</u></b> Level 1 – Routine Operations</p>	<p><a href="http://ready.alaska.gov">http://ready.alaska.gov</a></p>	<p><b><u>National Terrorism Advisory System:</u></b>  <a href="#">Read the NTAS Bulletin here</a></p>
<p><b><u>Maritime Security (MARSEC)</u></b> Level:1- Minimum Appropriate Security Measures</p>	<p><b>WHO Novel Coronavirus Pandemic (COVID-19):</b> <a href="#">2019 Novel Coronavirus</a></p>	<p><b><u>Alaska Military Installation Force Protection</u></b> <b><u>Level:</u></b> FPCON Bravo</p>

(Significant changes from previous situation reports are red.)

**Significant Issues:**

None

**State of Alaska Department of Health (DOH):**

The DOH is ready to assist with all aspects of public health and is supported by the SEOC and other state departments as required in the event of a public health emergency.

For current information, see: <https://health.alaska.gov/dph/Pages/default.aspx>  
<https://health.alaska.gov/dph/Emergency/Pages/prepared/default.aspx>

**NTAS Bulletin:**

The U.S. Department of Homeland Security issued an updated National Terrorism Advisory Bulletin on May 24, 2023. The current and expired bulletins can be viewed at the below link.

<https://www.dhs.gov/national-terrorism-advisory-system>

**Travel Alerts and Conditions:**

**Off-Ramp Closure: Glenn Hwy to S. Glenn Off Ramp**

The off-ramp from the southbound Glenn Hwy to the S. Old Glenn will be CLOSED nightly from 9PM to 5AM Sunday, July 14 through Thursday, July 18. To DETOUR around the closed off-ramp, keep heading south on the Glenn Hwy, exit at Eklutna, and use the on-ramp there to enter the Glenn Hwy headed north.

For current driving conditions, dial 511 or visit: <https://511.alaska.gov/>

**Barry Arm Landslide / Tsunami Risk:**

For the latest information on the Barry Arm Landslide and Tsunami risk, click here:

<https://dggs.alaska.gov/hazards/barry-arm-landslide.html>

### **Earthquakes:**

United States Geological Service (USGS) Earthquake Information: <http://earthquake.usgs.gov/>

National Tsunami Warning Center: <http://tsunami.gov/>

### **Alaska Volcanoes:**

**Great Sitkin** Alert Level: **Watch** and Aviation Color Code: **Orange**

**Shishaldin** Alert Level: **Advisory** and Aviation Color Code: **Yellow**

For Alaska Volcano updates, go to: <https://www.avo.alaska.edu/>

### **Air Quality Index (AQI) Advisories:**

Active advisories/episodes are still in effect for the Central and Eastern Interior.

For the most up-to-date Air Quality Index Advisories:

<http://dec.alaska.gov/Applications/Air/airtoolsweb/Home/Index>

### **Spills of Oil and Hazardous Substances:**

The Alaska Division of Environmental Conservation (ADEC) Spill Prevention and Response page is located at: <https://dec.alaska.gov/spar/>

### **Alaska Cyber Security Information:**

State Employees may sign up for cybersecurity notifications and alerts at:

<https://oit.alaska.gov/security>

Cybersecurity and Infrastructure Security Agency (CISA)-Cybersecurity Services and Tools:

[www.cisa.gov/free-cybersecurity-services-and-tool](http://www.cisa.gov/free-cybersecurity-services-and-tool)

### **Alaska Wildland 2024 Fire Season:**

The Alaska Interagency Coordination Center is now at Preparedness Level 2

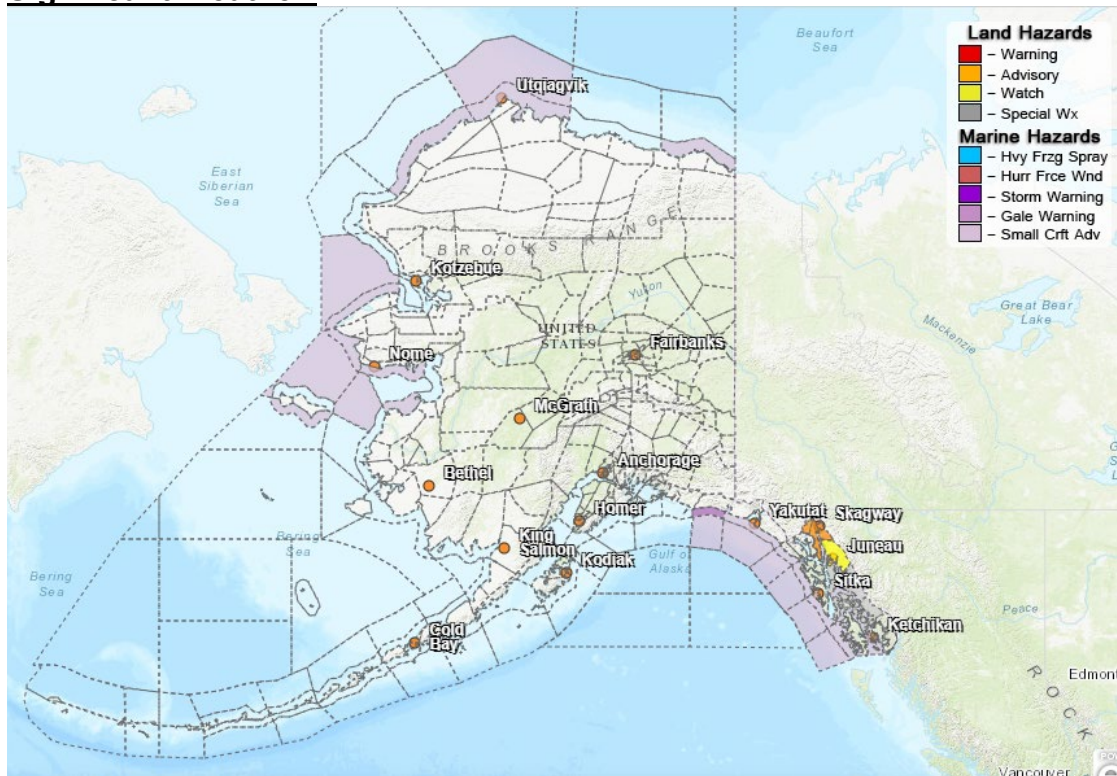
Total Fires YTD: 335

Total Acres: **597,770**

There are currently **149** active fire(s), with **0** new and **4** fires staffed.

For more information, go to <https://fire.ak.blm.gov/> or <https://akfireinfo.com/>

## Significant Weather:



## Flood Advisory:

- **City and Borough of Juneau-** until 10am this morning.
- **Haines Borough and Klukwan-** until 4:30am Wednesday.

## Flood Watch:

- **City and Borough of Juneau-** in effect from this evening through Wednesday night.

## Hydrologic Outlook:

- **Admiralty Island, City and Borough of Juneau, Petersburg Borough, Western Kupreanof and Kuiu Island, City and Borough of Wrangell-** moderate to heavy rain for mid-week.

For more information and the most current Weather, Watches/Warning/Advisories go to:

<https://www.weather.gov/arh/>

**The Next Situation Report** will be **July 17, 2024**. A significant change in the situation or the threat level will prompt an interim report. This report is posted on the internet <https://ready.alaska.gov/sitrep>.

To register for email distribution, go to <http://list.state.ak.us/mailman/listinfo/dhsem.situation.report>. Direct questions regarding this report to the SEOC at 907-428-7100 or [seoc@alaska.gov](mailto:seoc@alaska.gov).